



Catholic Charities
Fort Worth

Welcoming the Stranger into our Communities: Refugee 101

Faith Driven.

Service Driven.

Forward Driven.



Who Is a Refugee?

Someone who has fled their country and cannot return because of persecution due to:

- Race
- Religion
- Nationality
- Political opinion
- Social group membership



Faith Driven.

Service Driven.

Forward Driven.



Definitions

- Refugee – Someone who has fled their country and cannot return because of persecution due to race, religion, nationality, political opinion, or social group.
- Non-US Tie Cases – Cases without known family or friends in the U.S.
- U.S. Tie Cases – Cases with family or friends here who are willing to assist with resettlement.
- SIV – Special Immigrant Visa for Iraqis and Afghans who are allies to the U.S. Government

Faith Driven.

Service Driven.

Forward Driven.



Definitions

- Asylee – a person who is seeking or has been granted political asylum after arriving on their own in the U.S.
- Cuban-Haitian Entrant – a citizen of Cuba or Haiti who has entered the United States and been granted “parole” status by Homeland Security.
- URM – the Unaccompanied Refugee Minor program provides long-term foster home placement for refugee children who are eligible for resettlement in the U.S. but who have no parent or relative here to provide care.
- UAC – Unaccompanied Alien Children who are in Federal custody because of their immigration status, and who have no parent or legal guardian in the U.S.

Faith Driven. Service Driven. Forward Driven.



Before Resettlement

What are other options?

- Repatriation to country of origin
- Remain in country of asylum
- Resettlement in 3rd country – last option of the three solutions

Faith Driven. Service Driven. Forward Driven.



Life Waiting in a Refugee Camp

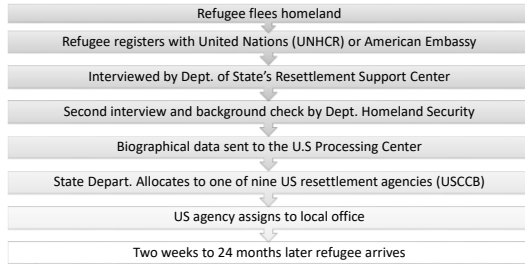
It can take months or years for a refugee to be accepted for resettlement.



Faith Driven. Service Driven. Forward Driven.



Resettlement in the US



Faith Driven. Service Driven. Forward Driven.



Determining Local Capacity

- Local resettlement agencies track success rates including economic self-sufficiency, and monitor community infrastructure and service capacity.
- Agencies consult with local stakeholders about capacity, including other service providers, public agencies, elected officials, State Refugee Coordinator and State Refugee Health Coordinator.
- Local agencies confer with national offices to reach consensus on community resettlement capacity.

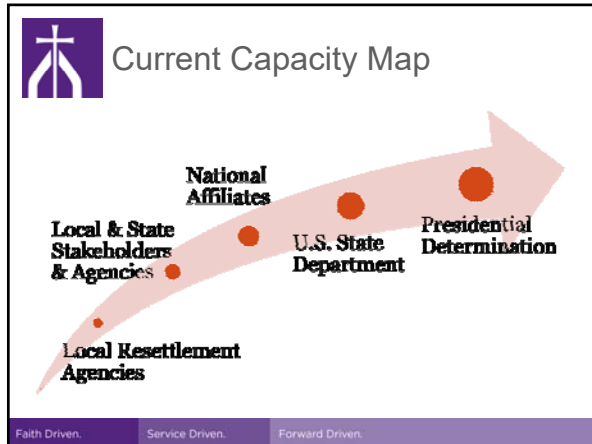
Faith Driven. Service Driven. Forward Driven.



Determining National Capacity

- Based on cumulative input from local offices, each national agency reports their total capacity to the US State Department.
- Each October a Presidential Determination sets the annual refugee admission ceiling (not target) and authorizes per-capita resettlement funding.
- US State Department controls the flow of refugees into the US by allocating individual cases to national agencies as they are referred from the UN and from US embassies overseas.

Faith Driven. Service Driven. Forward Driven.



-
- Resettlement Services**
- Airport Reception
 - Culturally Appropriate Groceries
 - Safe & Appropriate Housing
 - Health Assessment
 - Immunizations
 - Cultural Orientation
 - Social Security Card
 - Pocket Money
 - Medicaid Enrollment
 - SNAP Enrollment
 - Employment Program Enrollment
 - ESL Enrollment (Adults)
 - School Enrollment
 - Enrollment in other services as needed: SSI, specialized medical care, food pantries, utility bill assistance
- Faith Driven. Service Driven. Forward Driven.

-
- Other Refugee-Specific Services**
- School Impact (children and parents)
 - Job Preparation and Placement
 - Cash Assistance
 - Social Adjustment Services
 - Citizenship & Integration Services (green cards, citizenship applications)
 - Refugee Matching Grant (integrated job placement, cash assistance and case management)
 - Older Refugee Programs
 - Refugee Mental Health Programs (services vary by agency)
- Faith Driven. Service Driven. Forward Driven.



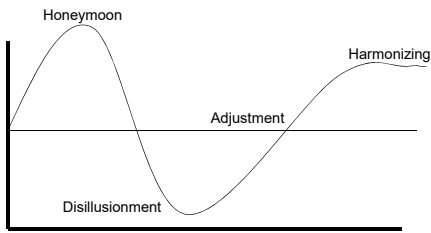
Public / Private Partnership

- Resettlement is based on a Public/Private Partnership, resettlement agencies work with the local community to provide support for newly arrived refugees through:
 - Co-Sponsorships
 - Family Friendships
 - Mentors
 - Volunteers
 - Donations
 - Community Assistance

Faith Driven. Service Driven. Forward Driven.



Cultural Adjustment Cycle



Faith Driven. Service Driven. Forward Driven.



Common Refugee Stressors

- Finances
- Culture
- Community
- Separation from loved ones
- Language
- Identity issues
- Health

Faith Driven. Service Driven. Forward Driven.



Volunteer Opportunities

- Family Friendships
- ESL Tutors
- Kid's Programs
- Job Readiness
- Jewelry making
- After school Programs
- Summer of Hope –Back to school Program
- Coaching
- Apartment Set-Ups
- Grocery Store Orientation
- Bus Training
- Budgeting/Financial Planning Training
- Mentoring Program
- Women Empowerment

Faith Driven.

Service Driven.

Forward Driven.
